



**SOUTH KITSAP**  
SCHOOL DISTRICT

# Capital Levy Projects Quarterly Update

FEBRUARY 2021

# How are priorities established?

- Compliance with Levy Resolution
- Need
- Level of complexity/professional assessments needed
- Limit interruption to instructional day
- Levy Cashflow

# What was approved by voters?

Capital Improvements \$18,951,553	Safety & Security \$2,030,325	Instructional & Support Technology \$3,712,500
\$24,694,378		

Potential projects and estimates were considered to reach these sums, plus perceived availability of SCAP "state match" at the time of the levy resolution

# Completed Projects

Project	Project Category	Estimated Amount with contingency	Expended	Net	Completed
Interactive Projectors Middle & High School	Instr/Supp Tech	\$550,000	\$504,639	\$45,361	Yes
Software Licensing	Instr/Supp Tech	\$467,500	\$15,565	\$451,935	Partial
Electronic Card Access at Middle Schools	Safety Security	\$275,000	\$230,870	\$44,130	Yes
Expand Access Control Elementary Schools	Safety Security	\$110,550	\$137,933	(\$27,383)	Yes
Roofing Marcus & Sedgwick	Cap Improv	\$1,725,000	\$944,585	\$780,415	Yes
DO Roof Repairs	Cap Improv	\$345,000	\$377,523	(\$32,523)	Yes
Sunnyslope Roof Repairs	Cap Improv	\$575,000	\$523,273	\$51,727	Yes

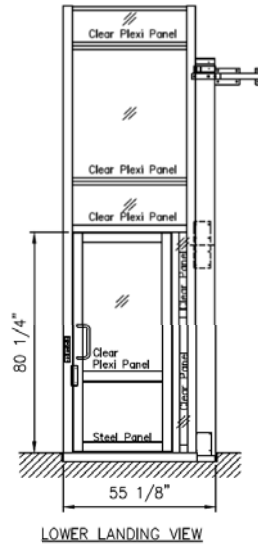
# Completed Projects

Project	Project Category	Estimated Amount with contingency	Expended	Net	Complete?
Security Cameras - Middle Schools	Safety & Security	\$316,250	\$273,929	\$42,321	Yes (Revised budget)
Intercoms	Safety & Security	\$460,000	\$479,746	(\$19,746)	Yes
Portable Classroom Roofing	Cap Improv	\$575,000	\$205,255	\$369,745	Phase 1 2020 Projects Complete
Wooden Ramp Replacements	Cap Improv	\$460,000	\$300,071	\$159,929	Phase 1 2020 Projects Complete
Portable Exterior Envelope Repairs	Cap Improv	\$552,000	\$201,261	\$350,739	Phase 1 2020 Projects Complete
Net difference to date:				\$2,216,650	

# Projects Underway Now

Project	Project Category	Estimate with Contingency	Spent so far	Encumbered	Status
OCR Compliance – Accessibility and SKHS Restroom Remodel	Cap Improv	\$2,329,000	\$747,000	\$1,196,991	Phase 1 – SKHS core student restrooms, ADA ramps, north parking lot ADA parking and shop are in construction. Expected completion March 2021.
Fire Alarm Replacement, SKHS	Safety & Security	\$517,500	\$558,795	\$53,465	Substantially complete nearing final inspection sign-off.

# OCR Compliance Work Underway



New platform, ramp and stairs at common projects for ADA classroom and teacher lounge and  
New ADA ramp at commons and new ADA lift to access shop classroom level in common project

# OCR Compliance Work Underway

SKHS north parking lot ADA improvements complete – new pavement, ramp, striping, signs





# SKHS Restrooms

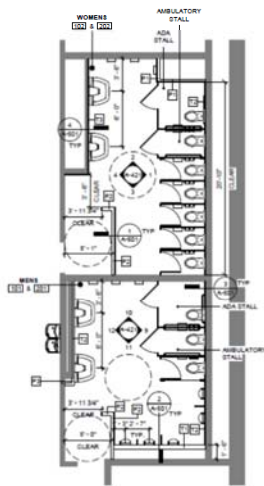
Renovation of six main student restrooms at SKHS

Project goal to make restrooms ADA compliant and replace worn and dated fixtures and finishes

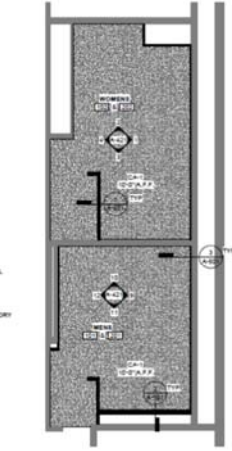


Before construction – noncompliant ADA fixtures and layout, peeling flooring, corroded stainless steel

# SKHS Restrooms



CORE TOILET ROOMS AT 1ST & SECOND FLOOR - PROPOSED  
SCALE: 1/4" = 1'-0"



CORE TOILET ROOMS AT 1ST & 2ND FLOOR - RCP  
SCALE: 1/4" = 1'-0"

- NO/RY  
 2. REFERENCE SHEET A-102 FOR ACCESSIBILITY REQUIREMENTS.  
 3. PROVIDE NEW TOILET ACCESSORIES PER ELEVATIONS AND MOUNTING HEIGHT STANDARDS PER SHEET A-102.  
 4. PLAN VIEWS ARE CUT AT 4'-0".  
 5. NEW TOILET PARTITION AND URINAL SCREENS TO BE PROVIDED AS REQUIRED.  
 6. REFERENCE SHEET A-102 FOR FINISH LEGEND, KEY & SCHEDULE.

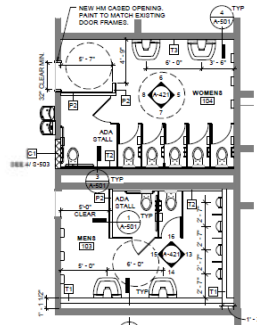


### RESTROOM GENERAL NOTES

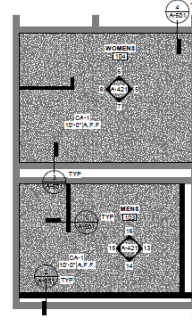
- INSTALL NEW TOILET TISSUE DISPENSERS (TTO) AND TOILET SEAT COVER DISPENSERS (TDC) AT ALL NEW WATER CLOSETS.
- INSTALL BRASS BARS (BB) AT ALL NEW ADA STALLS.
- INSTALL NEW SANITARY WASTE DISPOSAL (SWD) AT ALL WATER CLOSETS IN ROOMS 101, 104, AND 201.
- SEE NOTES FOR SALVAGED TOILET ACCESSORIES. INSTALL SALVAGED ACCESSORIES PER ELEVATIONS. PROVIDE NEW AS REQUIRED.

### BID ALTERNATE NOTES

- BID ALTERNATE 1:  
 1. INSTALL SALVAGED TOILETS AND URINALS  
 2. MATCH ADDITIONAL TOILETS AND URINALS TO SALVAGED FIXTURES.



COMMONS TOILET ROOMS - PROPOSED  
SCALE: 1/4" = 1'-0"



COMMONS TOILET ROOMS - RCP  
SCALE: 1/4" = 1'-0"

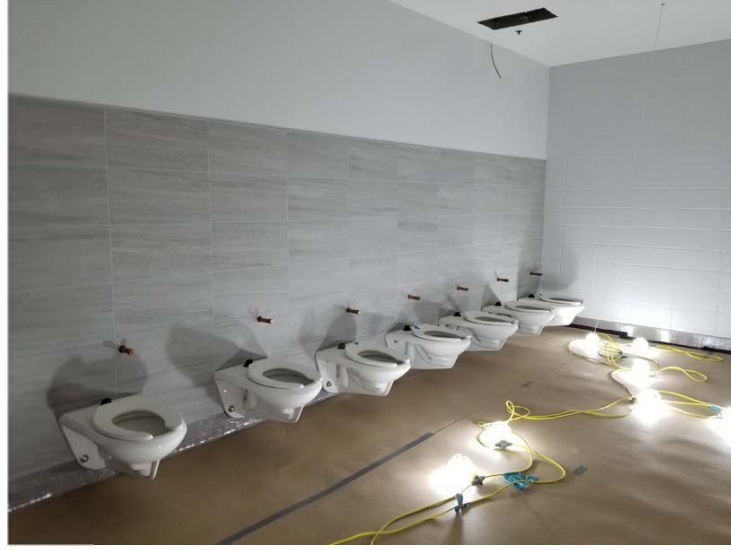
New design swaps men's and women's restrooms to maximize space for fixtures and meet ADA clearances

New finishes and fixtures are durable, low maintenance and attractive

Work includes new ADA compliant drinking fountain with bottle fillers

# SKHS Restrooms

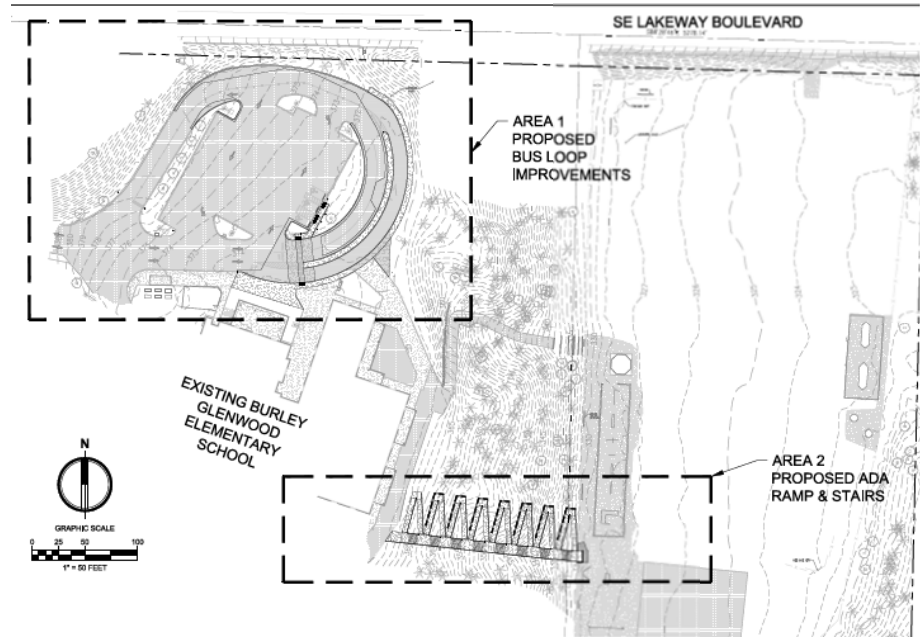
Construction progress showing new epoxy floors, tile wall finish, plastic composite stall partitions



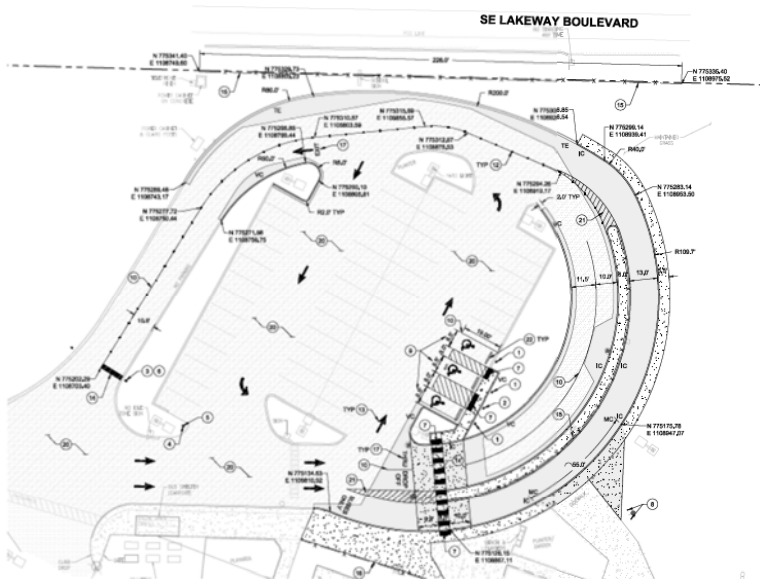
# Burley Glenwood ADA Project



Existing steep path navigates over 40' elevation change between school and playfield

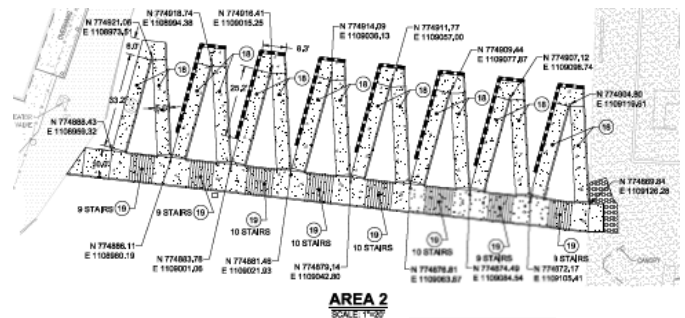


# Burley Glenwood ADA Project



## Project Benefits:

- New ADA compliant ramp and 8' wide stairs linking school to playfield
- Reconfigured ADA compliant parking
- New raised sidewalk, signage and lane markings to improve safety
- Reconfigured bus loop and parent drop off to improve traffic flow



# SK Community Pool



The SK Community Pool is a complex renovation project.

The pool building is a system where the water temperature, indoor air temperature and circulation, water chemicals and building envelope need to be balanced.

The renovation must consider all these areas as well as specialized pool code requirements, ADA accessibility and features unique to SK like the hydraulic adjustable pool floor.

The following slides will show some of the challenges of this facility.

# SK Community Pool

The pool roof has comprehensively failed after less than 15 years due to inadequate interior ventilation. There are major water leaks throughout the entire roof. The ventilation system does not provide enough circulation and excessive moisture builds up. Chlorine corrodes all metal components in the building, rusts out roof fasteners, ventilation equipment, doors and lockers.



# SK Community Pool

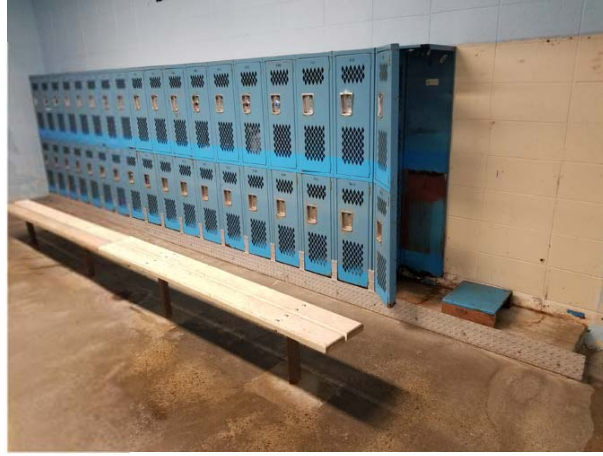
The German designed and installed adjustable hydraulic floor and bulkhead were state of the art equipment in the 1970's.

This style of movable floor has been out of production for decades. SKHS equipment is beyond end of life and no longer functions correctly. Parts are difficult to find, and few technicians can work on the system. The design of this flooring system makes maintenance and cleaning challenging.





# SK Community Pool



The locker rooms are in poor condition from decades of use and a harsh environment. They are not ADA compliant. The pool does not have public restrooms for spectators or family changing rooms which are now common at public pools.

# SK Community Pool



The pool lighting has been found to not meet code by Kitsap Public Health. In an agreement with the health department, we operate additional lifeguard coverage due to the inadequate lighting level.

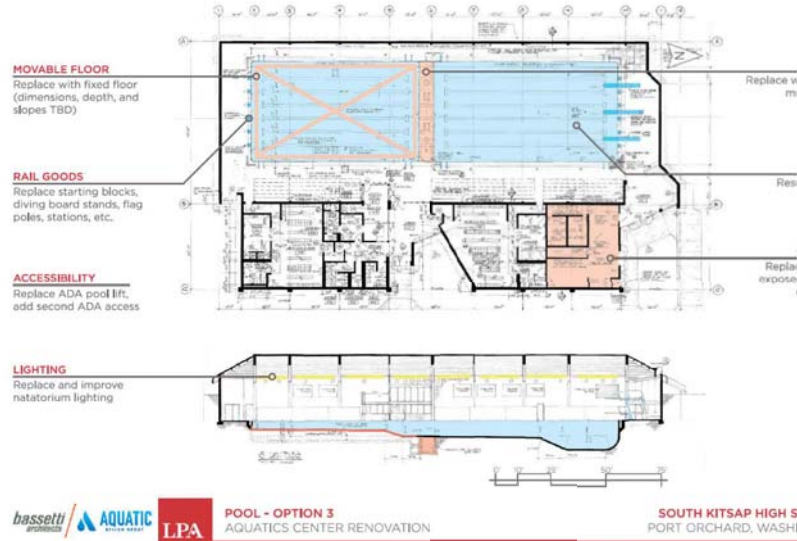
Our electrical engineers have determined a new main electrical panel and underground wire feed will be needed for the renovation and Labor and Industries is requiring that we replace the original undersized electrical transformer serving the building.

# SK Community Pool

The SK Community Pool Renovation budget as envisioned in the Capital Projects Levy did not include all the necessary repairs and replacements that are needed.

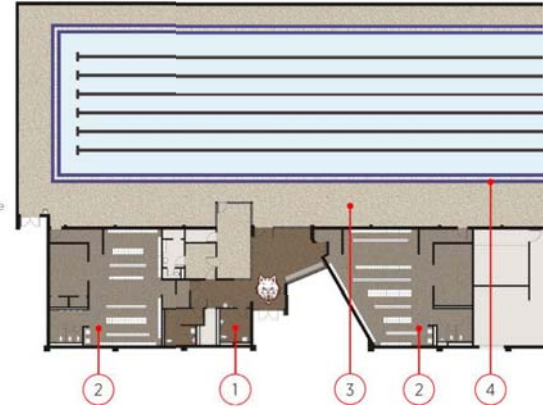
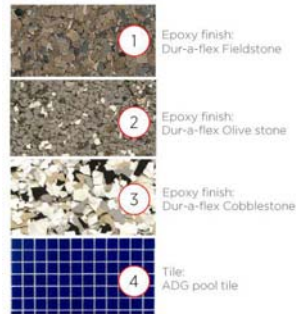
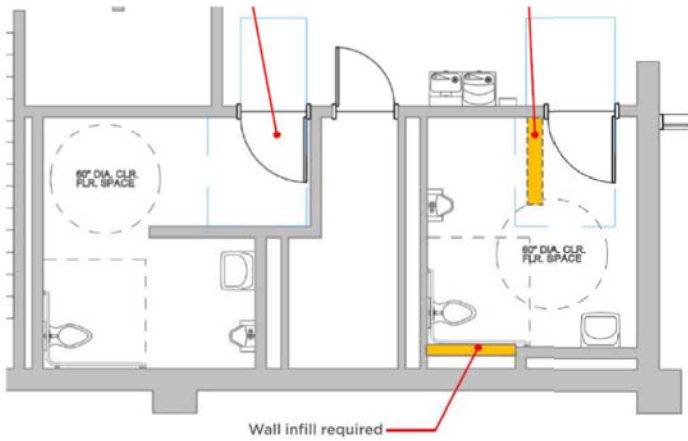
Items that were not included:

- Roof replacement
- Re-engineering and replacement of the ventilation system
- Locker room renovation
- ADA compliance upgrades



# SK Community Pool

We have engaged our consultant design team to address all the deficiencies at the pool in a comprehensive and cost sensitive manner. The first design phase of schematic design will be complete by mid-March as well as a detailed cost estimate.



# SK Community Pool

## SKHS Pool Renovation - Detailed Schedule

Exhibit D

bassett a

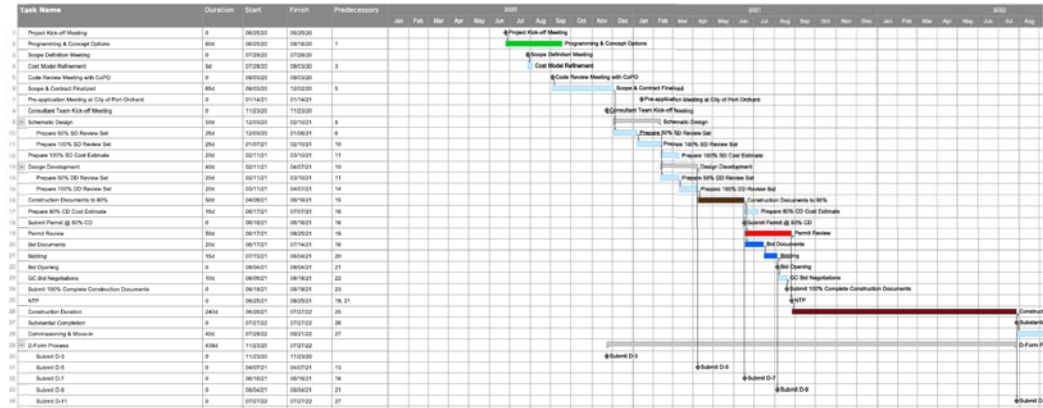
### Project Schedule

Design: 12/2020 – 6/2021

Permitting: 5/2021 – 7/2021

Bidding: 7/2021 – 8/2021

Construction: 9/2021 – 7/2022



# Projects in planning / design phase

Project	Project Category	Estimate w/Contingency	Status
Burley Glenwood Field Access	Cap Improvements	\$460,000	Project in permit review. Bidding February/March 2021
SK Community Pool	Cap Improvements	\$5,244,000	Design underway
OCR Compliance - Accessibility	Cap Improvements	\$1,131,000	Phase 2 - SKHS auditorium seating locker rooms, gymnasium restroom staff restrooms, service counters Phase 3 - Discovery HS restrooms Design underway
Portable Classroom Roofing	Cap Improvements	\$294,000	Prioritizing and pricing 2021 project
Wooden Ramp Replacements	Cap Improvements	\$99,000	Prioritizing and pricing 2021 project
Portable Exterior Envelope Repairs	Cap Improvements	\$278,000	Prioritizing and pricing 2021 project

# Projects in planning / design phase

Continued

Project	Project Category	Estimate w/Contingency	Status
Marcus Whitman and John Sedgwick Tracks	Cap Improvements	\$1,725,000	Consulting contractors and obtaining pricing
Central Kitchen Backup Generator	Safety and Security	\$218,000	Design in progress. This replaces previous envisioned generator at Transportation Facility

# Projects in planning summary:

- SK Swimming Pool
- BG Accessibility/Parking
- Additional work on portables
- Student Computer Devices
- MS Tracks
- Central Kitchen Backup Generator



# Tracking Expenditures



# What is next?

- ▶ Complete design work on pool, collaborate with city officials on requirements for permitting, design bid package/drawings
- ▶ Teaching & Learning in collaboration with Instructional Technology staff will plan for student device procurements, training, and deployment
- ▶ Track project architect/contractor selection
- ▶ OCR Compliance – phase 2 permit and bidding
- ▶ Burley Glenwood Field Access – bidding and construction
- ▶ Central Kitchen Backup Generator – bidding and construction

*Promises made. Promises kept.*



Thank you

Questions?

---